

QUICK INSTALLATION INSTRUCTIONS FOR VHW 102, 104 , 204 , 103, 203 UV LAMP

DO NOT TOUCH THE UV LAMP WITH YOUR FINGERS



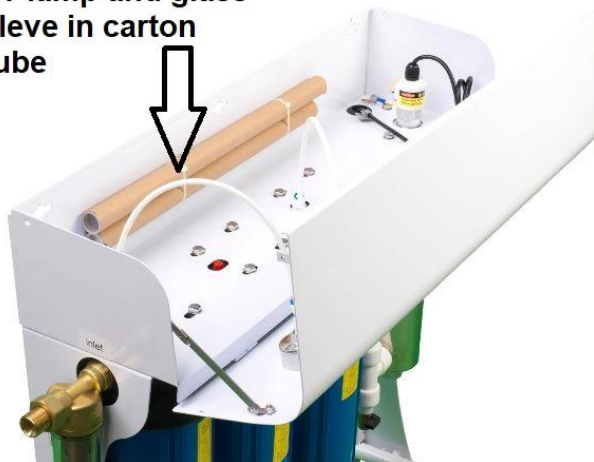
CONNECT A PRE-FILTER ON INLET FOR RAINWATER , WELLWATER OR BAD CITY WATER



HANG WATER SYSTEM ON THE WALL , OR PUT ON FLOOR
ATTACHE WATER TUBES CORRECT.

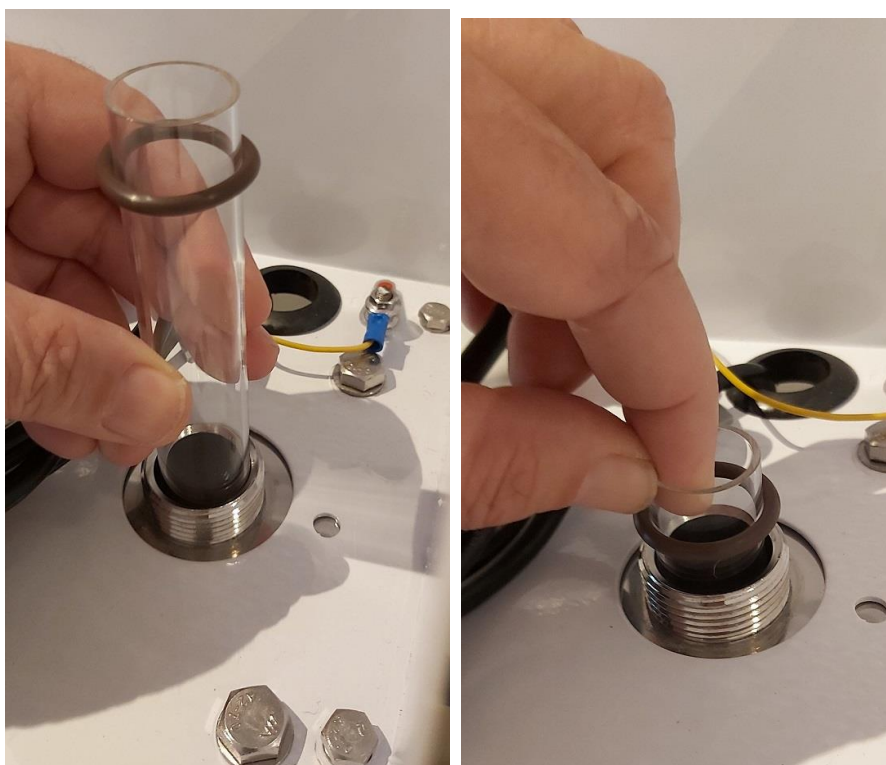
DO NOT PUT WATER PRESSURE ON

uv lamp and glass
sleve in carton
tube

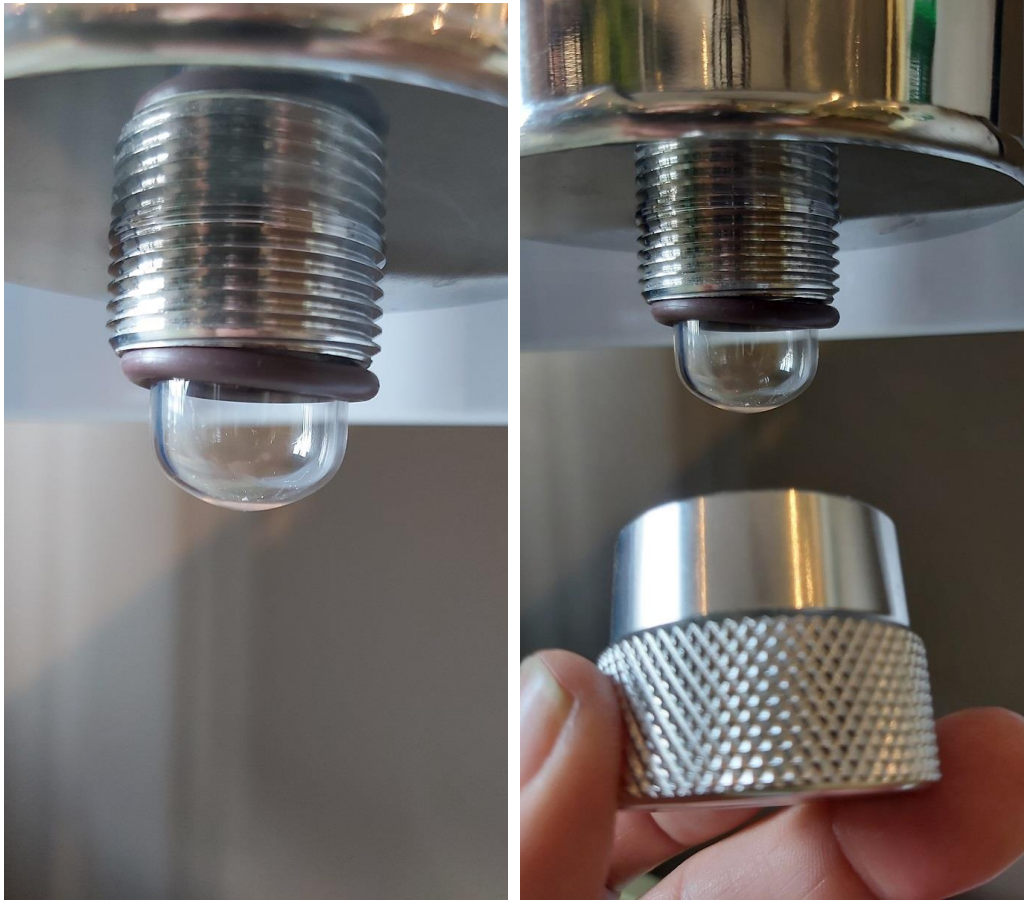




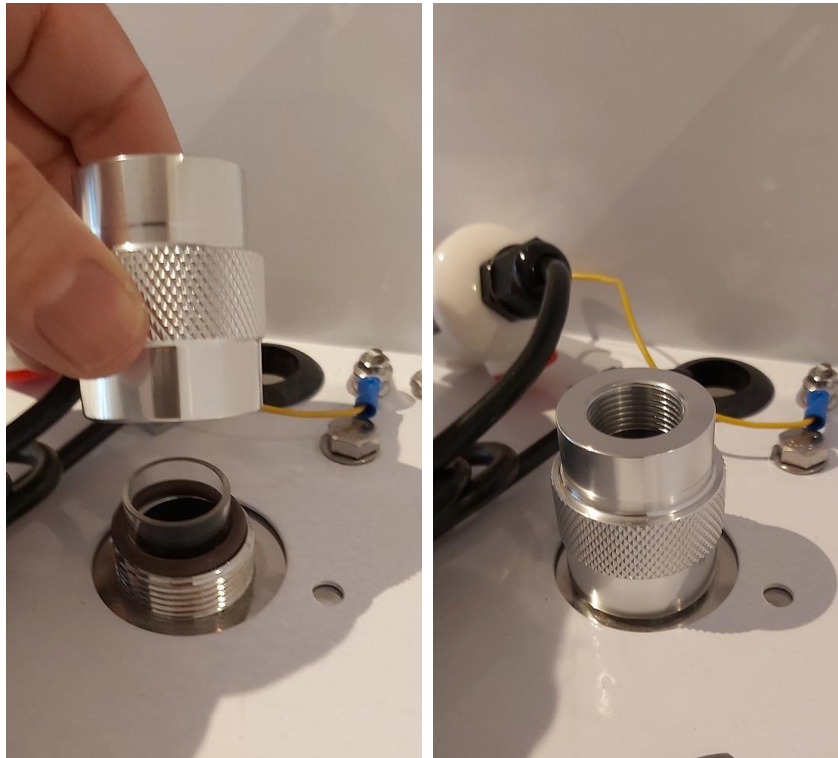
SLIDE O-RING ABOUT 1 CM OVER TOP OF GLAS TUBE



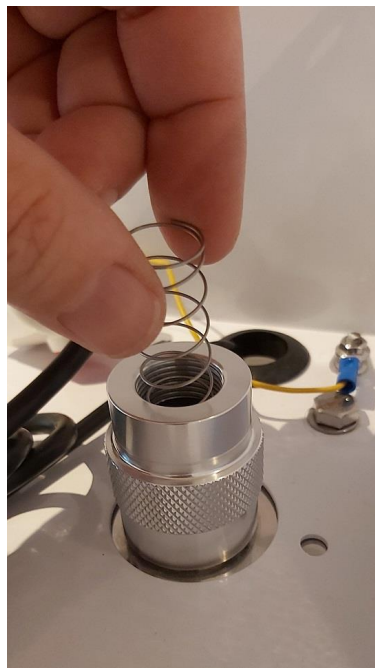
SLIDE THE TUBE IN TO THE UV CHAMBER



SLIDE THE O RING OVER THE BOTTOM OF THE TUBE AND SCREW PLUG ON HAND TIDE.



PUT THE CAP ON AND SCREW HAND TIDE.



INSERT THE SPRING

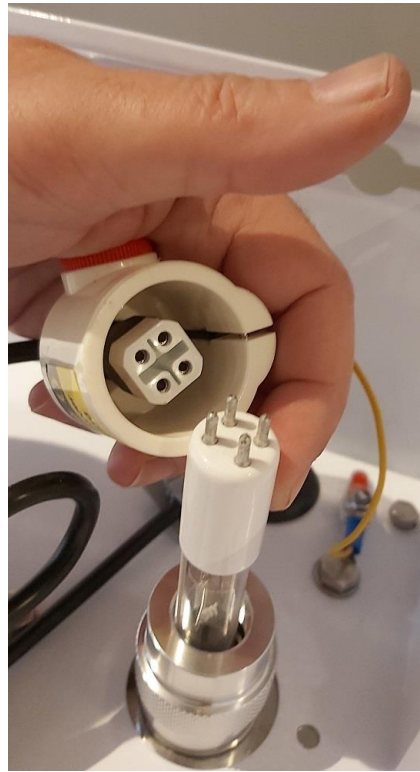


TAKE OUT THE UV LAMP OUT OF THE CARTON

DO NOT TOUCH THE UV GLAS LAMP WITH FINGERS



SLIDE IN UV LAMP IN UV CHAMBER



INSERT THE UV LAMP AND HOLD , PLACE 4 PINS CONNECTOR ON LAMP



INSERT THE LAMP WITH CAP , AND SLIDE CAP DOWN



CONNECT TO ELECTRICITY , LAMP SHOULD LIGHT UP, TURN OFF ELECTRICITY

do not touch the lamp with fingers

**TAKE OUT THE PLUG FROM THE ELECTRICITY , DO NOT BURN
FOR LONG TIME W/O WATER CONNECTION**



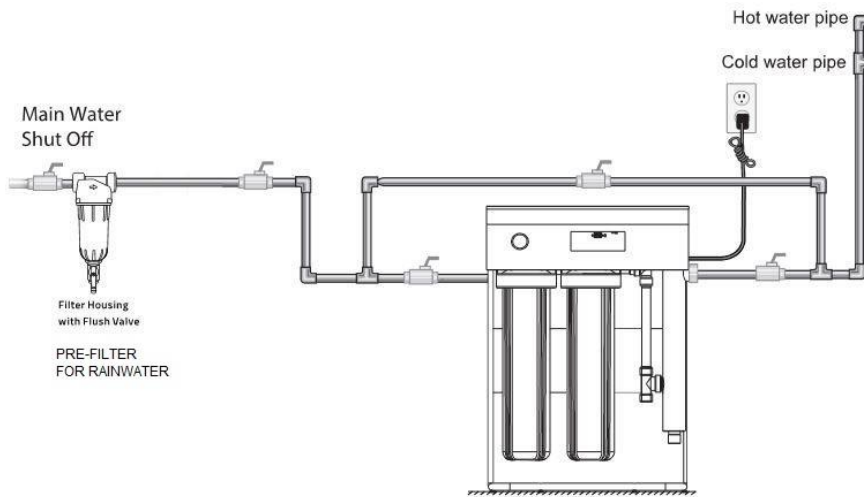
DISPLAY SHOWS SAY 365 DAYS, PLUG OUT WALL SOCKET

NOW YOU CAN PUT WATER PRESSURE ON THE SYSTEM



**PUSH THE RED BUTTON , TO TAKE OUT AIR .
CHECK IF THE UV CHAMBER IS NOT LEAKING ON THE O-RINGS
MAKE SURE THAT THE 3 BLUE FILTERS ARE TIDEN . PUT ON WATER PRESSURE
ONCE ALL IS CONNECTED , PLUG IN ELECTRICITY .
SYSTEM IS READY TO USE
IN BEGIN WATER WILL HAVE SMALL BUBBLES , THIS WILL GO AWAY.**

Step 2: Installation procedure



Typical installation